

# System Management Dashboard (SMD)

We've Got the Ability to...

MEDxConnect Systems Management Dashboard™ is an innovative administrative software tool that enables efficient management of the enterprise by providing a graphic overview of workflow operations. The graphical and tabular displays in the SMD supply the user with insight into network traffic, workflow volumes, image status, server capacities and other workflow operations to help you manage your business more efficiently. Our control panels provide enterprise managers with real-time monitoring of the network, allowing them to quickly identify network bottlenecks and outages as soon as, or even before they occur. The SMD is a powerful tool that allows you to be proactive in managing your business operations.

...Give You Control

## The MEDxConnect SMD

- Compiles and displays workflow enterprise activities
- Receives input from HL7, DICOM, and other systems
- Supports user defined performance alerts

## The MEDxConnect SMD Monitors

- Bandwidth
- Efficiencies
- Exam routing
- Network performance and traffic
- Performance of system resources
- Retrieval timing and usage

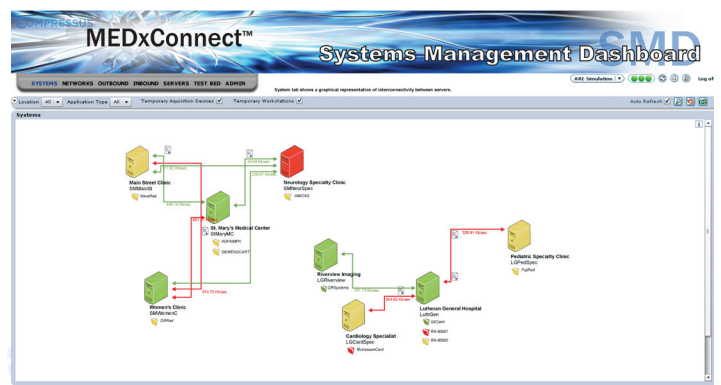
## The MEDxConnect SMD Displays

- Graphic and tabular information
- Real time analysis of enterprise or facility network traffic and efficiency
- Summarized enterprise or facility workflow statistics based on user defined criteria

## The MEDxConnect SMD Provides

- Facility-based administrative user logins for high-level control and security
- Enterprise-wide patient study status views
- Performance based system and network capabilities for alerts and study notifications

## MEDxConnect Systems Management Dashboard



- **Administration View:** Tabular view for setting User Management, Locations Management, Servers Management, Views Management, System Logs, System Alerts, General Settings, User Settings and Roles Settings; as well as customer selected parameters for alarms and warnings.
- **Inbound View:** Displays a list of studies going to a particular server and a destinations list for this server.
- **Network View:** Displays a graphic presentation of network performance by servers and a table of performance for a selected server.

- **Outbound View:** A graphic and tabular display showing details of enterprise performance for a selected server, including memory utilization, input/output, and systems and network performance.
- **Server View:** Displays a table for the selected server by modality and a studies table for the server.
- **Systems View:** Displays the whole network plan that SMD is currently monitoring. Provides a graphic showing workflow problems in red, warnings in yellow and normal in green, based upon customer prescribed levels.